

Project:



Scan for more info!

Owners manual  
Quick install  
Quick sizing  
Install layout  
Parts list

## **CR-1SW-PB**

Push button, Compact countertop

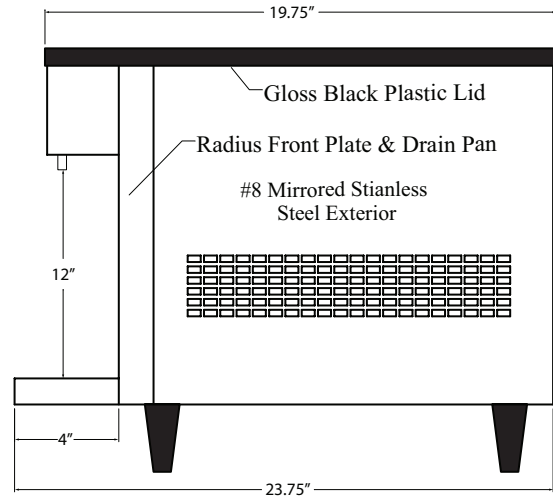
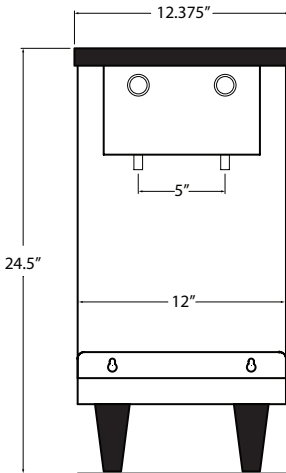


### **Chilled Water on Tap**

- Push button dispensing for Chilled Still water on 2 valves
- European design, mirrored finish stainless steel exterior
- Made in the USA

### **Specifications**

- 37 liters/10 gal per hour @<40°
- Self-contained refrigeration system
- Compressor: 1/5 H.P.
- Refrigerant: R134a CFC-free
- BTU: 2,200 per hour Ave
- Operating temperature range: 40°-100°
- Electrical: 120v - 3 Amps
- Water Bath: 3 Gallons
- Ice Bank: 10 lbs
- Weight: 65 lbs
- Clearance: 12"
- 12.5"W x 23.75"D x 24.5"H



- 3/8" Water inlet connector
- 7' Over flow drain hose
- 9' Electrical cord NEMA 5-15
- 4.25" legs

- Air intake at rear with air filter
- Allow for 6" rear & side clearance around unit for air flow
- Drip/Drain Pan: 1/2" barb fitting

## Accessories:

- CR-24FCP with Prefilter
- CR-24FC without Prefilter  
Twin filter system with compact fibredyne filters, 19"H x 17"W 5 gpm, 30,000 gal, TOC & 1/2 micron filtration



- CR-KIT-SWCT  
Installation Kit for Countertop Still water chillers, CR-1SW & CR-2SW, Includes: Various fittings and oetiker clamps, and extra tubing  
Still Water units only

